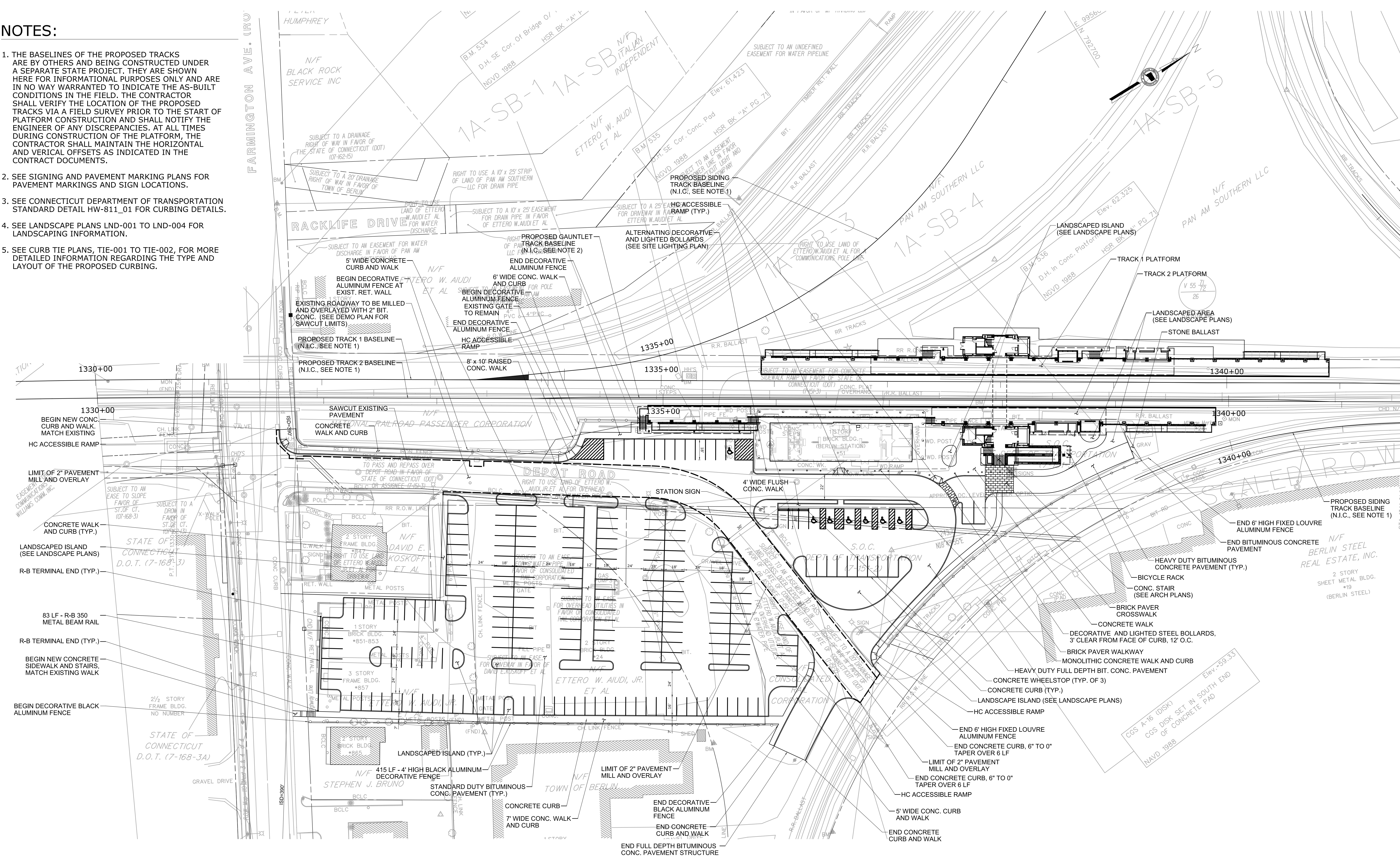


NOTES:

1. THE BASELINES OF THE PROPOSED TRACKS ARE BY OTHERS AND BEING CONSTRUCTED UNDER A SEPARATE STATE PROJECT. THEY ARE SHOWN HERE FOR INFORMATIONAL PURPOSES ONLY AND ARE IN NO WAY WARRANTED TO INDICATE THE AS-BUILT CONDITIONS IN THE FIELD. THE CONTRACTOR SHALL VERIFY THE LOCATION OF THE PROPOSED TRACKS VIA A FIELD SURVEY PRIOR TO THE START OF PLATFORM CONSTRUCTION AND SHALL NOTIFY THE ENGINEER OF ANY DISCREPANCIES. AT ALL TIMES DURING CONSTRUCTION OF THE PLATFORM, THE CONTRACTOR SHALL MAINTAIN THE HORIZONTAL AND VERTICAL OFFSETS AS INDICATED IN THE CONTRACT DOCUMENTS.
2. SEE SIGNING AND PAVEMENT MARKING PLANS FOR PAVEMENT MARKINGS AND SIGN LOCATIONS.
3. SEE CONNECTICUT DEPARTMENT OF TRANSPORTATION STANDARD DETAIL HW-811_01 FOR CURBING DETAILS.
4. SEE LANDSCAPE PLANS LND-001 TO LND-004 FOR LANDSCAPING INFORMATION.
5. SEE CURB TIE PLANS, TIE-001 TO TIE-002, FOR MORE DETAILED INFORMATION REGARDING THE TYPE AND LAYOUT OF THE PROPOSED CURBING.



-	-	-	-
-	-	-	-
-	-	-	-
-	-	-	-
-	-	-	-
REV.	DATE	REVISION DESCRIPTION	SHEET NO.

THE INFORMATION, INCLUDING ESTIMATED QUANTITIES OF WORK, SHOWN ON THESE SHEETS IS BASED ON LIMITED INVESTIGATIONS BY THE STATE AND IS IN NO WAY WARRANTED TO INDICATE THE CONDITIONS OF ACTUAL QUANTITIES OF WORK WHICH WILL BE REQUIRED.

Plotted Date: 2/28/2014

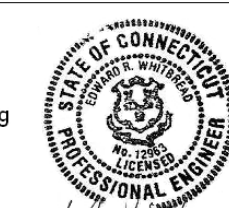
DESIGNER/DRAFTER:
P. BRAND
CHECKED BY:
A. SARDILLI
SCALE IN FEET
0 40 80
SCALE 1"=40'

**STATE OF CONNECTICUT**
DEPARTMENT OF TRANSPORTATION

Filename: ...\\FA_CGR_CPS_0170-2296_007_04_CSP_...SITE PLAN_001.dgn

SIGNATURE/
BLOCK:

Michael Baker Engineering
Inc.
500 Enterprise Drive
Suite 2B
Rocky Hill, CT 06067



PROJECT TITLE:
**NEW HAVEN - HARTFORD
SPRINGFIELD
RAIL CORRIDOR**

TOWN:
BERLIN
DRAWING TITLE:
SITE PLAN

PROJECT NO.
170-3155
DRAWING NO.
CIV-001
SHEET NO.
01.03.010